

CAM-ROLLER GATE VALVES

Bulletin 1100.001

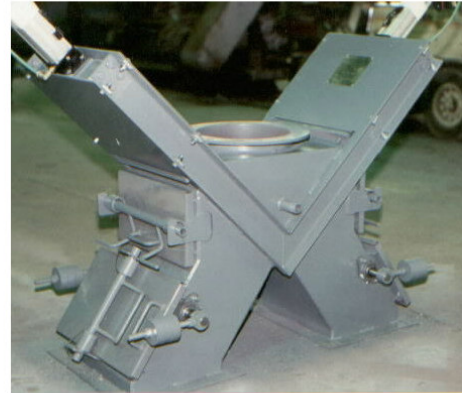
*The SINCLAIR CAM-ROLLER Gate Valve is specifically designed to serve industrial process industries with the same high quality engineering standards that describe our complete line of bulk material handling products. **Our experience** in keeping bulk materials moving is **your assurance** of solids flow control.*

The **SINCLAIR Horizontal "Cam-Roller" Gate Valve** is ideal for flow control of almost all dry, bulk materials. Since the gate operates on a **live bed of rollers**, most causes of jamming and gate clogging are removed. All construction is heavy-duty for low-maintenance, high quality industrial service.

Gate designs can include special mounting for round chutes, gear-assisted manual operators, bolted top cover plates, square-to-square or square-to-round bottom discharge chutes for dust tight operation and side-mount cylinder arrangements for applications where space is premium.



Large horizontal gate valves for granulated sugar service. Throat opening is ~ 36" square. All contact surfaces are T-304L-SS construction, with heavy-duty double-acting air cylinder actuation.

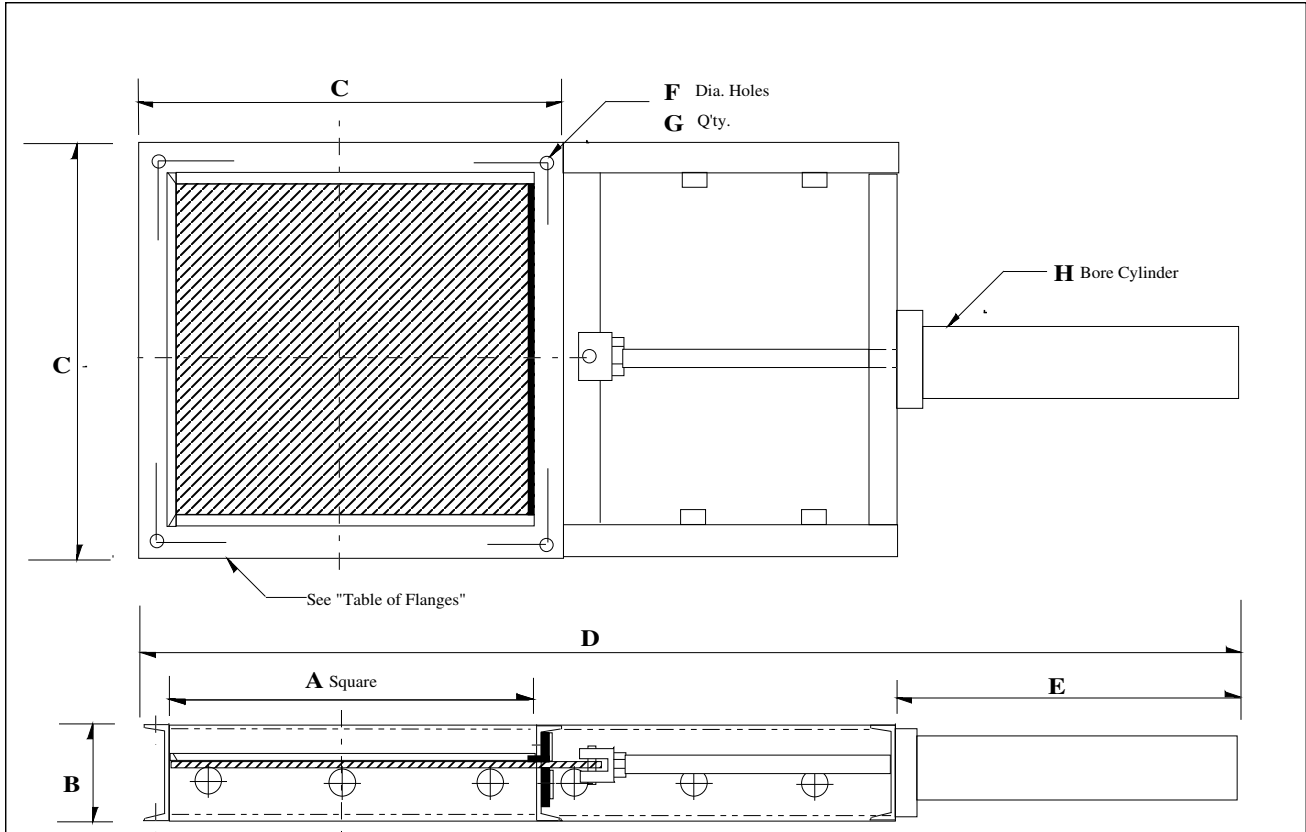


Twin cam-roller valves with pneumatic actuators, arranged in special housing to serve as V-gate diverter valve module for steel mill service. Note BWSI "CamLock" quick access inspection doors both sides

Standard design features include:

- **No tracks or slides** to jam gate. Gate **ROLLS**.
- Available in sizes from **6" to 6 ft.!**
- Configurations available to match square, rectangular, round or oblique chutes.
- Gate blades are **250 Bhn abrasion-resistant** steel.
- Valves are **completely assembled** in our factory, with pre-mounting and pre-piping of all automatic actuation and positioning devices.
- Valves available in **carbon steel, abrasion-resistant, high-temperature and stainless steel construction**.
- **Optional actuators** include:
 - Lever arm
 - Rack & pinion gear operator with hand wheel
 - R & P operator with chain wheel
 - Pneumatic cylinder
 - Hydraulic cylinder
 - Linear actuator
 - Electric motor with gear reducer

PNEUMATIC CAM-ROLLER GATE VALVE

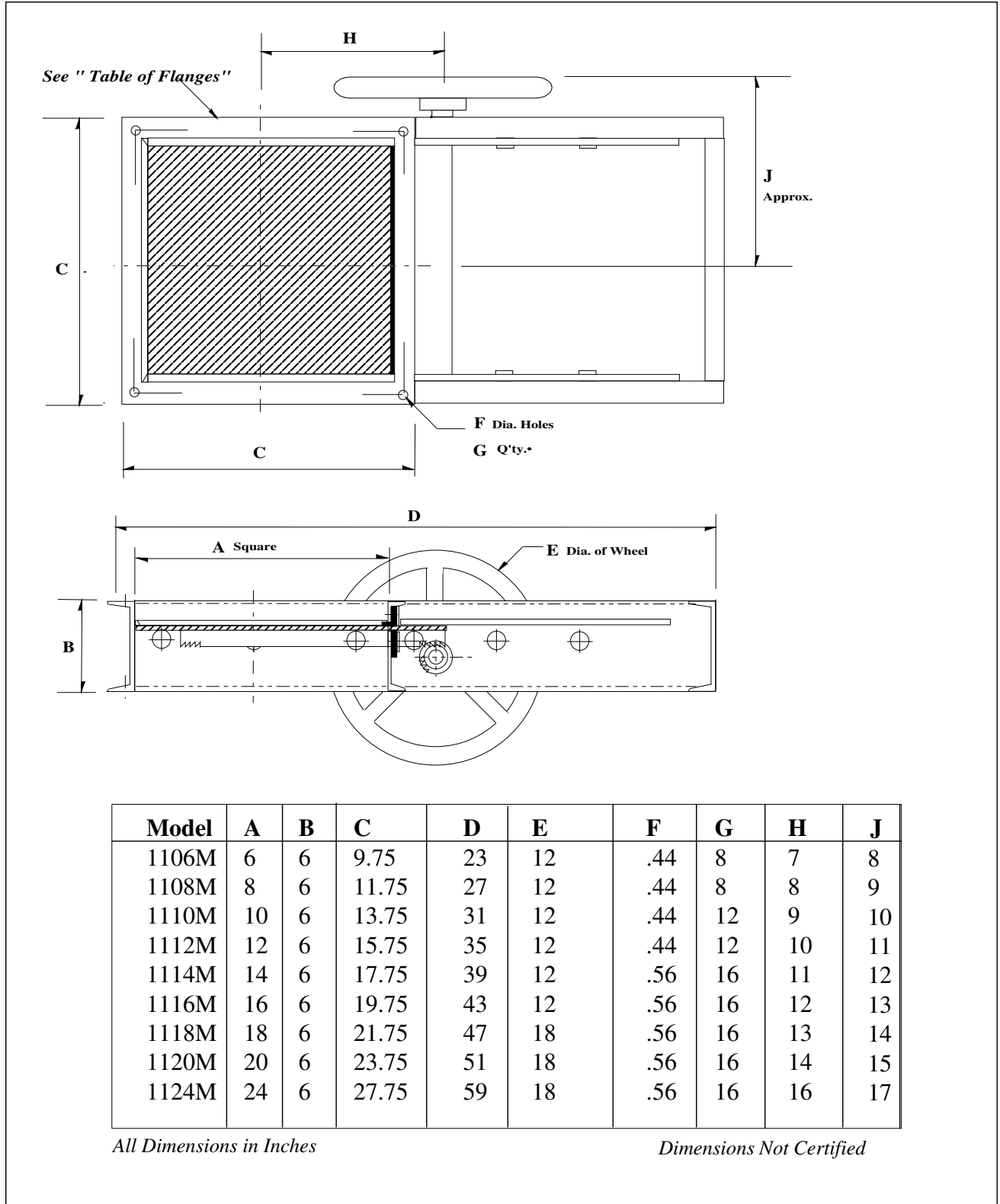


Model	A	B	C	D	E	F	G	H
1106P	6	6	9.75	33	11.88	.44	8	2
1108P	8	6	11.75	39	13.88	.44	8	2
1110P	10	6	13.75	46	16.38	.44	12	2.5
1112P	12	6	15.75	55	19.88	.44	12	3.25
1114P	14	6	17.75	61	21.88	.56	16	3.25
1116P	16	6	19.75	67	22.63	.56	16	4
1118P	18	6	21.75	74	25.63	.56	16	4
1120P	20	6	23.75	80	27.63	.56	16	4
1124P	24	6	27.75	94	31.88	.56	16	5

All Dimensions in Inches

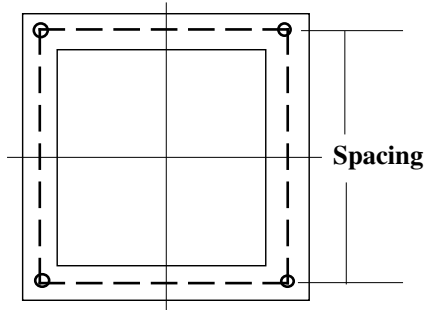
Dimensions Not Certified

RACK & PINION CAM-ROLLER GATE VALVE



CAM-ROLLER GATE VALVES

TABLE OF FLANGES

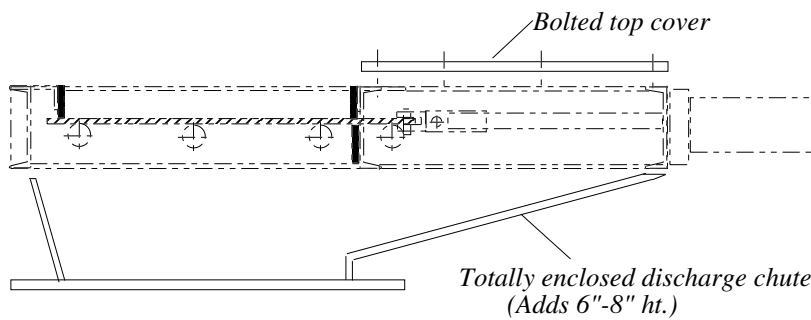


MODEL	HOLE DIA.	Q'TY.	SPACING
1106	7/16	8	2 sp. @ 4-1/8
1108	7/16	8	2 sp. @ 5-1/8
1110	7/16	12	3 sp. @ 4-1/16
1112	7/16	12	3 sp. @ 4-3/4
1114	9/16	16	4 sp. @ 4-1/16
1116	9/16	16	4 sp. @ 4-9/16
1118	9/16	16	4 sp. @ 5-1/16
1120	9/16	16	4 sp. @ 5-9/16
1124	9/16	16	4 sp. @ 6-9/16

Flanges identical, manual or pneumatic operation

All Dimensions in Inches

OPTIONS AND ACCESSORIES



Consult **SINCLAIR** for any option required by your process ... the options illustrated here are *not* meant to be a complete listing.

Custom designs are our specialty!

