

B. W. SINCLAIR INFORMATION UPDATE

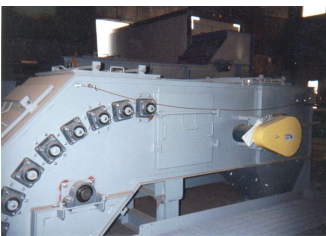
VERTICAL FLEXIBLE SIDEWALL BELT CONVEYOR FEEDS ALLOY ADDITIVES

B. W. SINCLAIR is one of the nation's leading OEMs for High-Inclined Flexible Sidewall Belt Conveyors, and nowhere is this more apparent than the steel industry.

The rise of electric arc furnace technology in this industry has required storage and feed systems for various fluxing and additive ingredients to adjust metallurgy and provide purification to molten scrap steel. Typical feed products range from 50 PCF lime and charge carbon to 250 lb alloys and derived iron.



A traditional bucket elevator is ill suited to elevate the required diversity of products, especially considering the wide-ranging density and lump size variations. The vertical flex-wall belt is the answer. Typical installations include truck or railcar unloading stations, including under-car hoppers, vibrating feeders, and 90° vertical belts to elevate the products to the on-site storage silo cluster.



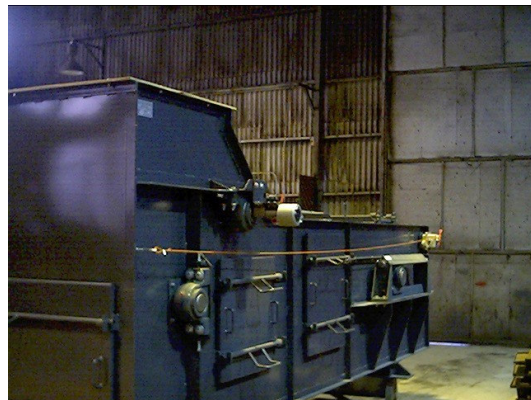
Returning the vertical belt to a horizontal discharge zone allows the most efficient transfer of material to the next conveyor. We accomplish this critical transition with an engineered radius-curve module. A BWSI "Belt Beater" cleaner, located immediately

behind the head pulley, helps discharge any residual material left in the pocket.



Machined and balanced deflection wheel assemblies allow the abrupt transitions in direction. BWSI quick-access CamLock™ inspection and access doors are located throughout the casings to allow operator inspection, maintenance, and cleanout.

Standard flat belt idlers support the carrying side of the belt in both horizontal sections; cantilevered stub rollers provide return-side support. No rollers or other maintenance parts are installed in the vertical casing, eliminating the need for access or service platforms and ladders.



The horizontal loading zone is engineered to allow sufficient residence time before the transition to vertical, thus assuring that spillover and agitation are not problematic.

The BWSI 90° Vertical Flexible Sidewall Conveyor is the choice of many international steel producers. Our experience in this industry is the client's assurance of a project brought in on time and on budget.

B. W. SINCLAIR, INC.

P. O. Box 1111 Wichita Falls TX 76307-1111 USA

www.bwsinclair.com 940-766-2556 voice 940-766-0430 fax sales@bwsinclair.com